

Creation and use of electronic Workflows (BPMN)

📅 03.06.2025 📍 Missionsstr. 9, 42285 Wuppertal



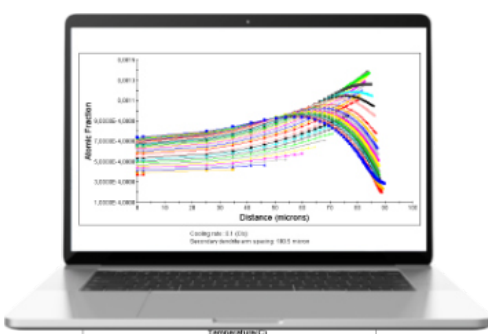
Why Workflows

Efficient processes are a decisive success factor in modern industry - from product development to production. The Business Process Model and Notation (BPMN) has established itself as a powerful method for modelling and optimizing business processes. The clear visual representation of processes enables better process control, promotes standardization and ensures greater transparency in complex workflows.

BPMN is an internationally recognized standard format that is used successfully in numerous industries - from the automotive sector to the chemical industry. The advantages are obvious: the structured modeling of processes shortens throughput times, reduces errors and improves collaboration between different departments.

This training course explains the basics of BPMN and shows how BPMN models can be created and executed directly in EDA. Matplus EDA enables the integration of BPMN workflows with existing PLM (Product Lifecycle Management) and ERP (Enterprise Resource Planning) systems. This allows process data to be exchanged automatically between systems and workflows to be controlled efficiently.

This practical training course not only teaches the basics of BPMN, but also shows how modelling can be used to improve approval processes and efficiently manage material data.



Goals of this Training

- ✓ Confident handling of BPMN models in EDA
- ✓ Improving process quality and transparency
- ✓ More efficient processes in materials technology and production
- ✓ Automated and error-free transfer of process data between BPMN, PLM and ERP
- ✓ Avoiding errors and shortening throughput times

8:30 Registration

9:00 **Welcome and introduction of the participants**

9:30 **Introduction to BPMN2**

- Importance and benefits of BPMN in the industry
- Structure and basic elements of BPMN2 (Processes, Events, Gateways)
- Supported functions of BPMN in EDA

10:30 **Modeling of BPMN in EDA**

- Implementation of BPMN in EDA
- Creation and use of EDA forms (input masks)
- Integration of Python scripts and interfaces to PLM and ERP

12:30 Lunch Break & Discussions

01:30 **Practical Application**

- Creating and editing BPMN diagrams in EDA
- Use of the EDA modeling tools
- Parameterization of tasks and events
- Looping principle and multi-level editing

Application Examples

- Approval of material data for product development, purchasing and production
- Creation and approval of material data as part of the sampling process according to VDA 231-301

05:00 **End of the Event**

1. Block

2. Block



Digitale Training Documents

You will receive the training documents and participant certificates from our team by email after the training.



Costs / Number of Participants

Due to the intensive supervision, especially during the practical exercises, the number is limited to 10. **The participation fee is € 549 plus VAT.** This includes the training documents (in English), two coffee breaks and lunch.

Cancellations less than 10 days before the start of the course will be charged in full. However, it is possible to appoint a substitute participant.

Date and Time

International conference center "auf dem Heiligen Berg"

Missionsstr. 9, 42285 Wuppertal

Tuesday, **03.06.2025, 08:30 am — 5:00 pm**



Registration

I hereby register bindingly for the training course on 03.06.2025.

.....
Participant: First name, last name

.....
Company

.....
E-Mail

.....
Phone

.....
Invoice address ZIP, City

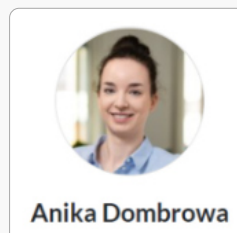
.....
Invoice address Street, Nr

.....
Tax ID.

.....
Date, Signature



Send your Registration to:



Matplus GmbH

Anika Dombrowa

Hofaue 55 • 42103 Wuppertal

Phone.: +49 202 29789780

Fax.: +49 202 29789789

anika.dombrowa@matplus.eu